

# BETTER FABRICATION STARTS WITH SDS2

Drive efficiency and profitability for your projects with SDS2 by ALLPLAN, the only steel detailing software with all-in-one intelligent connection design.



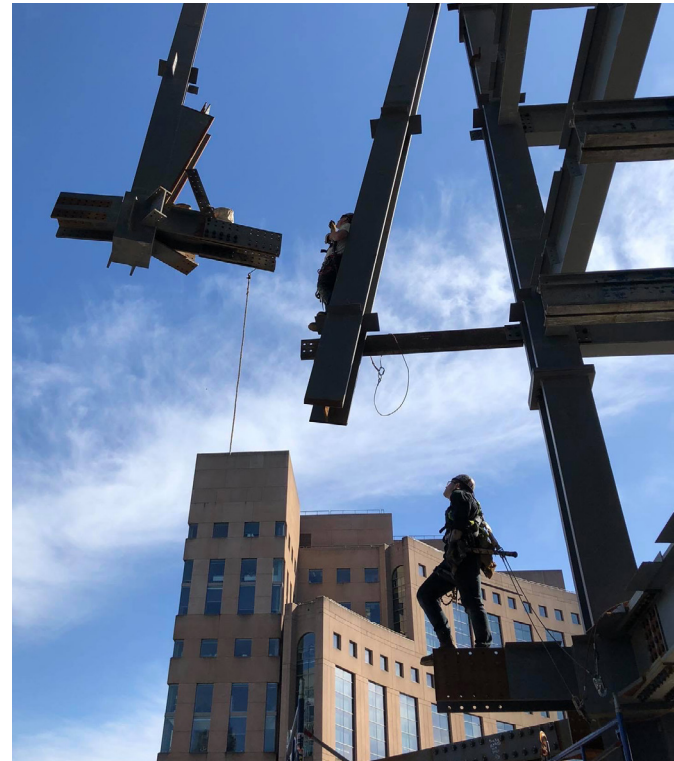
Deloitte Summit Tower, Vancouver  
Detailed in SDS2 by Supermétal Structures  
Photo courtesy of Westbank

**FIND US AT BOOTH #17**



**SDS2**  
BY ALLPLAN





Deloitte Summit Tower, Vancouver | Photos courtesy of Supermétal Structures

### DETAILING FEATURES

- Connection automation
- Complete node analysis with erectability checks
- Live multi-user modeling
- Automated piece marking
- Handrails and stairs
- Complex geometry
- Miscellaneous and plate

## EFFICIENCY, ACCURACY, RESULTS. IT ALL STARTS WITH SDS2.

THE RIGHT DETAILING SOFTWARE can drive efficiency and profitability for your company. With SDS2, you can quickly build and adapt the detailing model to suit the fabrication shop's needs, integrate your data seamlessly with any MRP, MIS and tracking system, and build designs for optimized shop routing. Advanced 3D modeling lets you work faster with fewer errors, deliver accurate results, and collaborate efficiently with BIM partners throughout the project pipeline.

WHAT SETS SDS2 APART from other detailing solutions? Unlike any other software on the market, SDS2 comes fully integrated with automated connection design—no third-party connection software required. Steel connections are designed as you model to drastically accelerate your detailing process. Plus, our proprietary design engine offers 360-degree real-world intelligence, analyzing the complete node for ultimate constructability and buildability.

# MAGNUS



MAGNUS is the exclusive Canadian distributor of SDS2 by ALLPLAN.